



**PUSH
TO OPEN**

PBR45

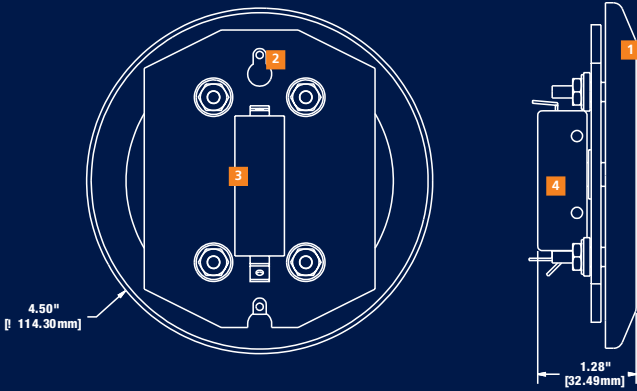
A smaller solution to the round push plate, this 4 1/2" plate is visible for use, but doesn't distract from building architecture

A Plate Revolution, Now!

- Ideal amount of surface area makes this push plate easy to see, but unobtrusive to the aesthetics of the building.
- Perfect for bollard and wall applications
- Beveled edges provide a tamper and vandal proof solution to your push plate needs, allowing no room to get objects between plate and box
- An all-active plate activates with any "push" location
- Stainless steel finish will not deteriorate/rust where it is touched and is scratch and scuff resistant
- Text and logo are baked onto the surface for leading durability
- Four screws (#6) included fit both single and double gang mounting boxes
- Push plates come in multiple colors and sizes that allow you to easily meet specifications and customer requests
- Weather boot between plate and back plate for all weather applications
- Lifetime warranty allows you to save money in the long run

Components

- 1 Front Plate
- 2 Back Plate
- 3 Cherry Switch
- 4 Weatherboot



Technical Specifications/M

- a. 16 gauge, 304 2B Stainless Steel Faceplate
- b. 1/8" thick, Aluminum Backplate
- c. Stainless Steel 6-32 x 1" and 8-32 x 1" Allen head mounting screws
- d. Cherry Switch: Single-pole, 15A, COM/ NO/ NC contacts
- e. 5/64" Allen key removes both 6-32
- f. Powdercoat then clear-coated faceplates available on certain styles
- g. Wire nuts

Custom Specifications

BEA proposes a variety of custom solutions for your push plates:

Abrasive Etching/Engraved – Customized using fine sand shot very precisely onto the surface of the steel plate to create a very accurate and deep “scratch” in the plate that is filled with paint to create the custom logo/text on the surface of the plate.

Pad Printed – Logo/text is stamped onto the surface of the steel plate using a special pad. The logo is only printed on the surface of the plate.

Embossing – This process requires the use of a special tool designed to punch the back of the face plate with the custom information. A special coating is added to the embossing process add a dramatic 3D effect to your push plate.

Contact Information

BEA Inc.
RIDC Park West
100 ENTERPRISE DRIVE
PITTSBURGH, PA 15275

PHONE 1-412-249-4100
FAX 1-888-523-2462
TOLL FREE 1-800-5 BEA INC

BEA West
190 East
Arrow Highway Suite A
San Dimas, CA 91773-3314
FAX 1-888-523-2462
TOLL FREE 1-877-232-9378

www.beasensors.com

PBR45 Series



10PBR45 - Text only



10PBR4510 - Plain

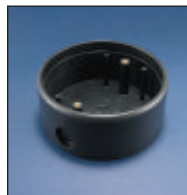


10PBR451 - Text and Logo

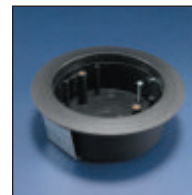


10PBR45LL - Logo only

Mounting Components



10BOX45RNDISM
Round Surface Mount
Box



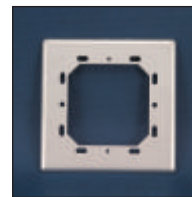
10BOX45RNDIFM
Round Flush Mount
Box



10WRRND45
Weather Ring



10BOLLARD



10BRINGC
Beauty Ring